

Latitude 15 3588

3000 Series

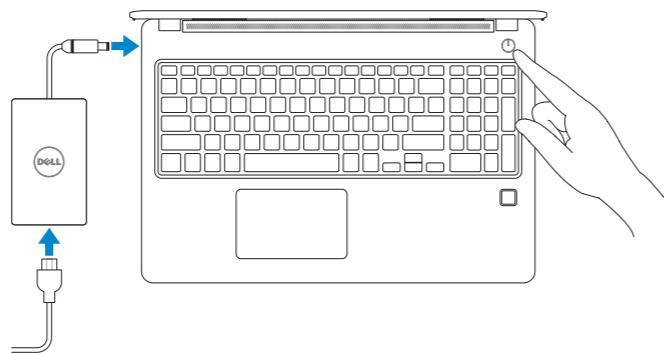
Quick Start Guide

快速入门指南



1 Connect the power adapter and press the power button

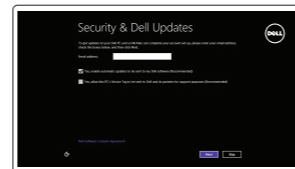
连接电源适配器并按下电源按钮



2 Finish operating system setup

完成操作系统设置

Windows 8.1



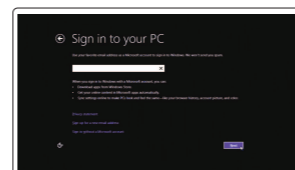
Enable security and updates
启用安全和更新



Connect to your network
连接到网络

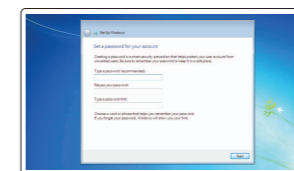
NOTE: If you are connecting to a secured wireless network, enter the password for the wireless network access when prompted.

注: 如果您要连接加密的无线网络, 请在提示时输入访问该无线网络所需的密码。

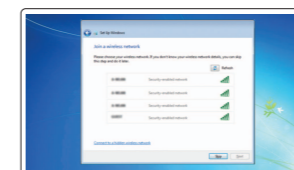


Sign in to your Microsoft account or create a local account
登录您的 Microsoft 帐户或创建本地帐户

Windows 7



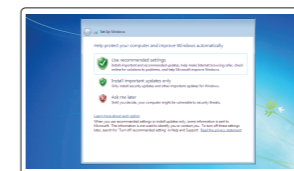
Set a password for Windows
设置 Windows 密码



Connect to your network
连接到网络

NOTE: If you are connecting to a secured wireless network, enter the password for the wireless network access when prompted.

注: 如果您要连接加密的无线网络, 请在提示时输入访问该无线网络所需的密码。



Protect your computer
保护您的计算机

Ubuntu

Follow the instructions on the screen to finish setup.
按照屏幕上的说明完成设置。

Locate Dell apps in Windows 8.1

在 Windows 8.1 中查找 Dell 应用程序



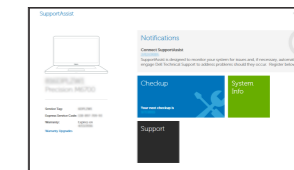
Dell Backup and Recovery Backup, recover, repair, or restore your computer
备份、恢复、修复或还原您的计算机



Dell Data Protection | Protected Workspace Protect your computer and data from advanced malware attacks
保护您的计算机和数据免受高级恶意软件攻击



SupportAssist Check and update your computer
检查和更新您的计算机



Product support and manuals

产品支持和手册

Dell.com/support

Dell.com/support/manuals

Dell.com/support/windows

Dell.com/support/linux

Dell.com/contactdell

Dell.com/regulatory_compliance

P79G

P79G002

Latitude 15-3588

Latitude 15-3588 系列

Contact Dell

与 Dell 联络

Regulatory and safety

管制和安全

Regulatory model

管制型号

Regulatory type

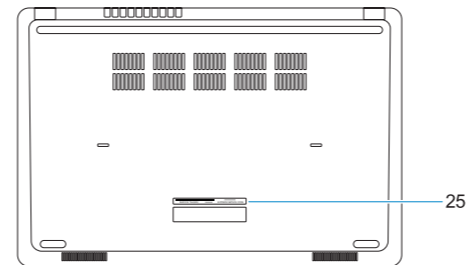
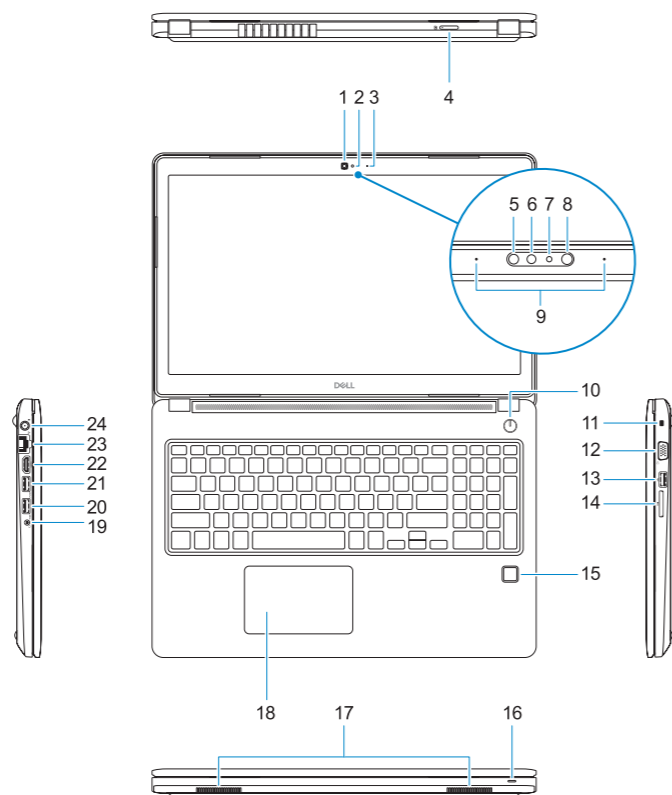
管制类型

Computer model

计算机型号

Features

功能部件



- | | | | |
|---------------------------------------------|-----------------------------------|---------------------|-------------------------------|
| 1. Camera | 15. Fingerprint reader (optional) | 1. 摄像头 | 16. 状态指示灯 |
| 2. Camera status light | 16. Status light | 2. 摄像头状态指示灯 | 17. 扬声器 |
| 3. Microphone | 17. Speakers | 3. 麦克风 | 18. 触摸板 |
| 4. SIM-card slot (optional) | 18. Touchpad | 4. SIM 卡槽 (可选) | 19. 耳机/麦克风组合插孔 |
| 5. Infrared camera (Touch version only) | 19. Headset/microphone combo jack | 5. 红外摄像头 (仅限触摸版) | 20. USB 3.0 端口 |
| 6. Infrared emitter (Touch version only) | 20. USB 3.0 port | 6. 红外发射器 (仅限触摸版) | 21. USB 3.0 端口 (带 PowerShare) |
| 7. Camera status light (Touch version only) | 21. USB 3.0 port with PowerShare | 7. 摄像头状态指示灯 (仅限触摸版) | 22. HDMI 端口 |
| 8. Camera (Touch version only) | 22. HDMI port | 8. 摄像头 (仅限触摸版) | 23. 网络端口 |
| 9. Microphones (Touch version only) | 23. Network port | 9. 麦克风 (仅限触摸版) | 24. 电源适配器端口 |
| 10. Power button | 24. Power adapter port | 10. 电源按钮 | 25. 服务标签 |
| 11. Noble Wedge security cable slot | 25. Service Tag label | 11. Noble 楔形安全电缆插槽 | |
| 12. VGA port | | 12. VGA 端口 | |
| 13. USB 2.0 port | | 13. USB 2.0 端口 | |
| 14. Memory card reader | | 14. 内存卡读取器 | |
| | | 15. 指纹读取器 (可选) | |



0CD04XA00